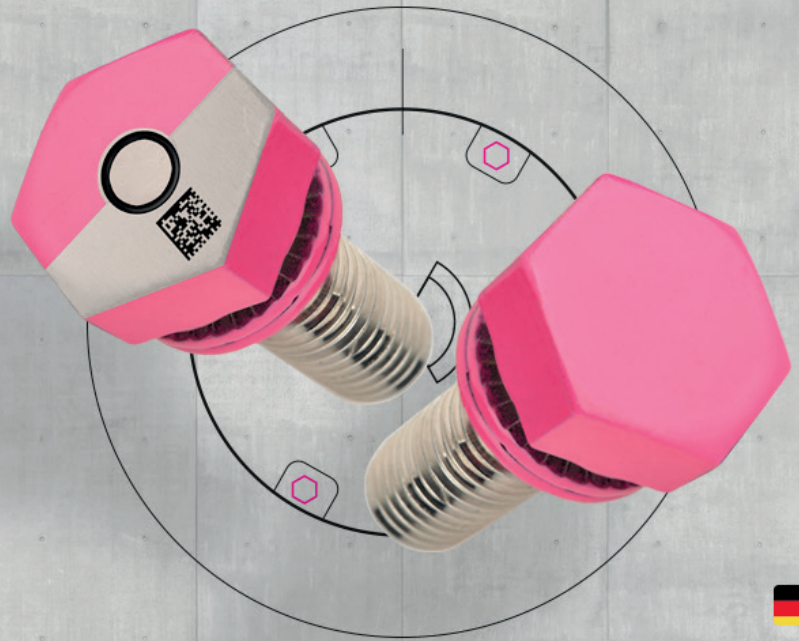




Airfield Ground Lighting Safety Screw



Designed,
developed and
made in Germany





MAGENTATM
LOCK



Application

The AGL safety screw comes as one piece, in a non-losable connection of pre-assembled safety washer and the pink screw. It can be used for shallow base installations. The system is comprised of a pair of washers that has cams on one side and radial teeth on the opposite side.

Since the cam angle at the washer is greater than the thread pitch of the screw a wedge effect is created by the cams, achieving a high preload force which even gets higher before loosening, details see drawing and load schematic on page 2.

Expert's recommendation

What can happen, will happen. Everybody ever been involved in a project will agree on this statement. In During installation and maintenance everything from missing one of the two washers, no washer at all, wrong sided assembly or even no screw at all can occur.

Knowing that and based on incidents happened, The Federal Aviation Administration (FAA) announced in their Cert Alert referring to AC 150/5340-26, 30 and EB 83

Airfield Ground Lighting Safety Screw

M10 screw for AGL

Universal use for extended preload safety, usable for all screwed AGL lighting products.

- Save Maintenance & Extend Operation
- Increase Safety For All Stakeholder
- Simplify & Save Money In Procurement
- Follow The Experts Recommendation

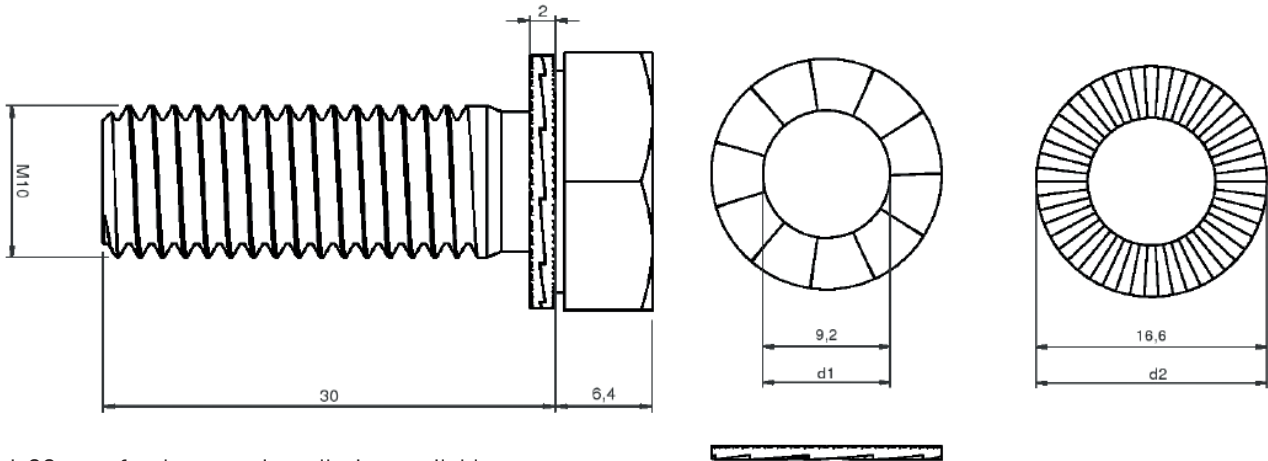
Features

- Preassembled, non-losable security washer
- Designed and made in Germany
- Patented processes & anti-loosening effect
- Colored for increased visibility & improved/simplified visual detection (FOD)
- Increased strength through rolled thread
- Locking effect, no waste/ retightening needed
- Maintains high clamp load
- Ensuring the function of the screw connection
- Quick and easy to install/ remove
- Locking function not affected by lubrication
- High corrosion resistance (A4)
- Optional safety nuts for stud installation
- Optional intelligence sensor function with direct preload measurement

"... it is highly recommended to use safety washers and screws in a color not commonly used in airports".

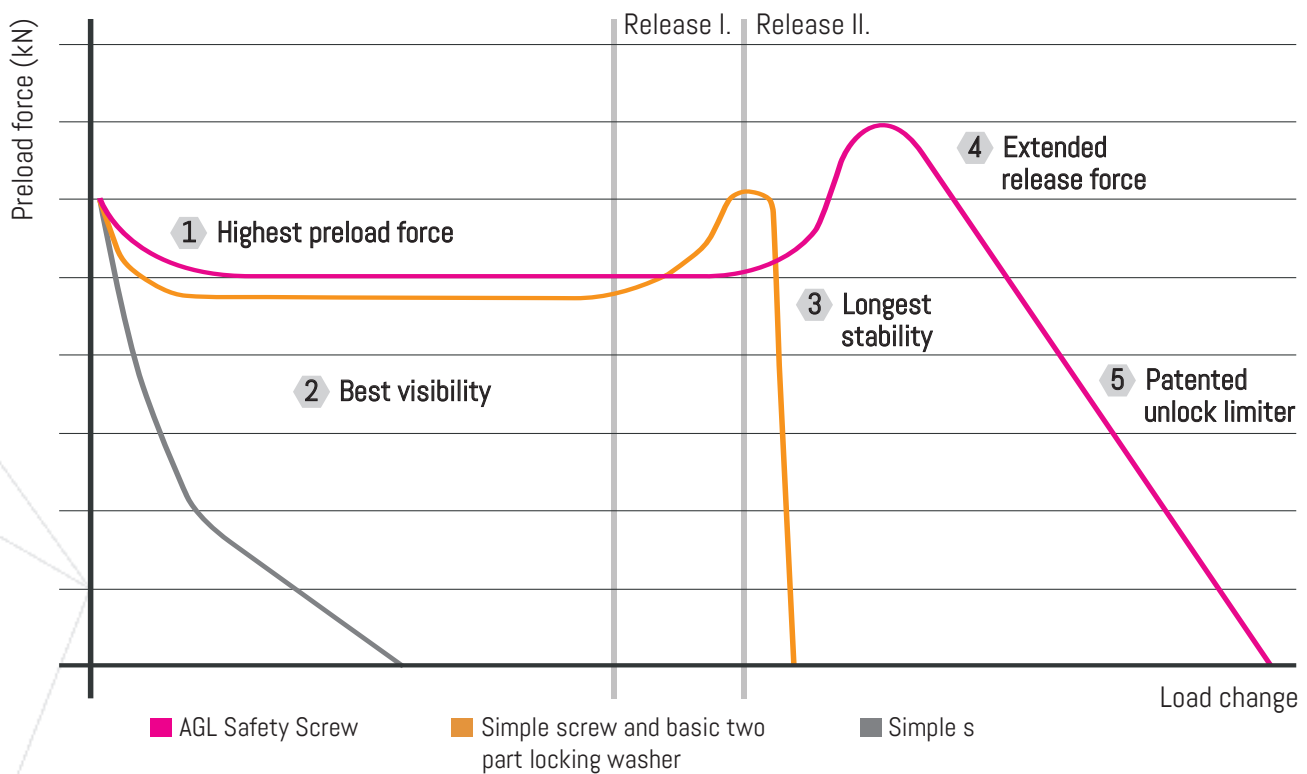
Considering that and few more steps towards Poka Yoke & Continuous Improvements practice we developed this combined solution which can make the difference to prevent having a major incident which can cause life. The results of using the washers are vetted in real live circumstances with international recommended airports around the globe.

Dimensions



* 60 mm. for deep can installation available

Securing with additional preload:



The diagram above describes the self-loosening behavior of secured and unsecured threaded fasteners under transverse loading conditions by vibration testing as per DIN 65 151.